

Figure legends:

Figure 1. Liver of rabbits experimentally exposed to methomyl insecticide.

- (A) Normal liver histology,
- (B) Degenerative changes in the hepatic tissue associated with extravasation of RBCs (arrow) in rabbits exposed to 10 mg/kg of methomyl insecticide,
- (C) Edematous fluid in the portal area with necrotic changes in hepatic cells (arrow) in rabbits exposed to 20 mg/kg of methomyl insecticide, and
- (D) Few of proliferation of bile duct with edematous fluid (arrow) in the portal area in rabbits exposed to methomyl plus ESe. HE, 50X (A,D) 400X(B,C).

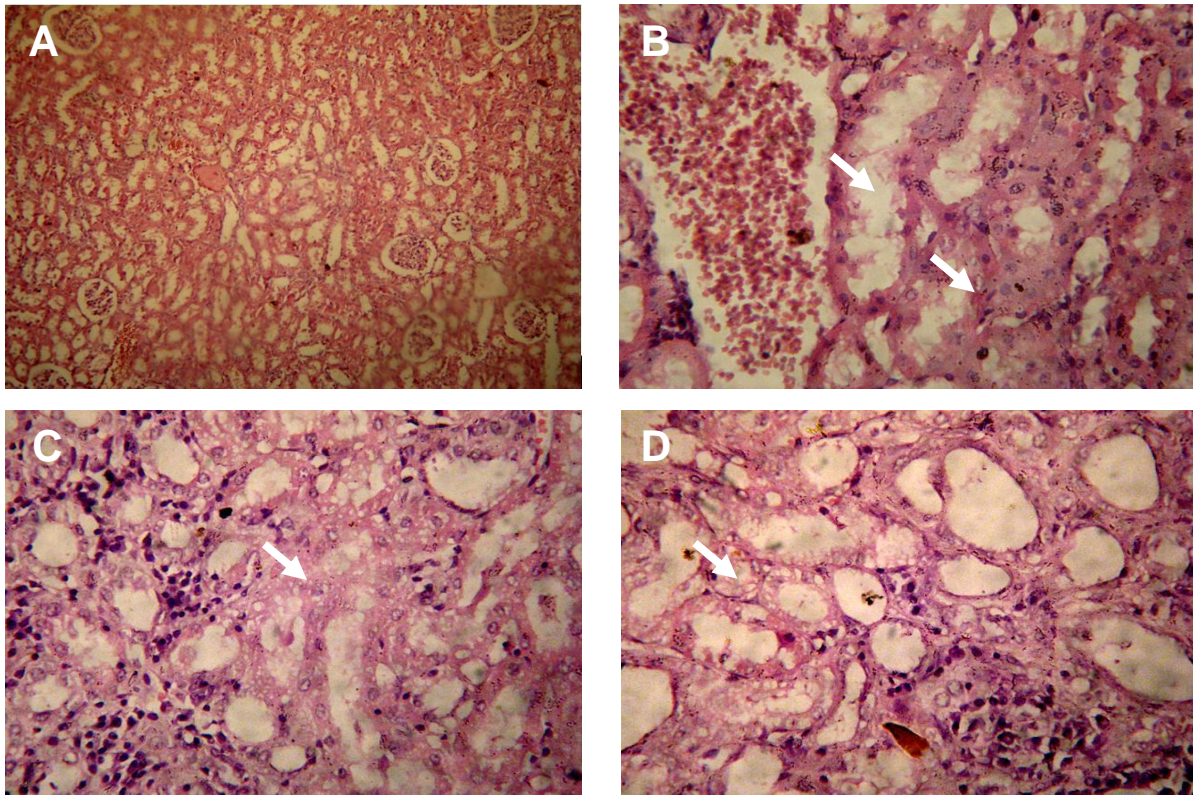


Figure 2. Kidney of rabbits experimentally exposed to methomyl insecticide.

- (A) Normal renal tissue histology,
- (B) Nephrotic damage (arrow) with infiltration of leukocytes in rabbits exposed to 10 mg/kg of methomyl,
- (C) Damage in the renal tissue (arrow) with leukocyte infiltration in rabbits exposed to 20 mg/kg of methomyl, and
- (D) Extravasation of RBCs and degenerative changes in the renal cells (arrow) in rabbits exposed to methomyl plus ESe (D). HE, 100X (A), 400X (B,C,D).